

QC/TP SERIES

Automatic Tool Changers | Features and Benefits

Flexibility of the tool:

Cylindrical Horizontal compliance devices are used for inserting components that may be misaligned with the tool. They allow a horizontal displacement that compensates for part placing inaccuracies.

For precision applications:

The use of high quality components allow to get centering repeatability from 0.02mm and angular repeatability from $\pm 10^\circ$.

Harsh environments:

The enclosed design of this series allows them to be used in harsh environments.

Spring assist:

Due to the optional spring assist, compliance may be used in single acting mode.

Failsafe Operation

Failsafe locking spring keeps units coupled in the event of pressure loss

Durable Components

Locking components are made from hardened bearing & tool steels

Self Lubricating Seals

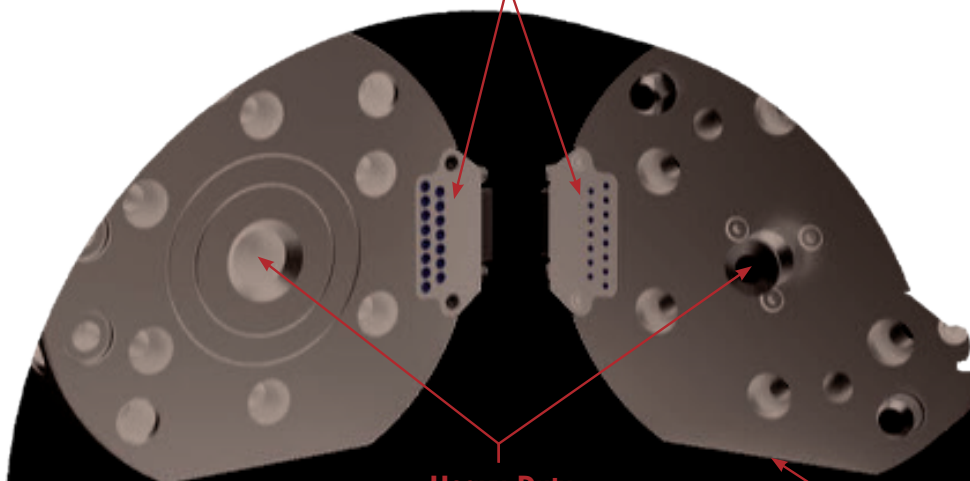
Self lubricating dynamic seals

Offboard I/O Block

with heavy-duty pins offer reliable contact points

Robot Plate

Tool Plate



**Switches for Couple/
Uncouple/Ready-to-Couple**
Switch for latch (size 150 only)

**Heavy-Duty
Locking Mechanism**
Improved rigidity
for heavy-duty and
in-process changing

Module Mounting Surface
Flat for optional pneumatic,
fluid or electric module
(See Page TC-QCTP-13)

Mounting Information



Robot Plate
has counterbored
holes for mounting
and two dowel pins
for hole location (size
30 has pilot boss)



Tool Plate
has counterbored
holes for mounting
and two dowel pins
for hole location (size
30 has pilot boss)

RHC SERIES

Automatic Tool Changers | Features and Benefits

Robotic applications:

Perfect for those flexible/multiple tooling applications utilizing one Robot. This product was designed with exceptional repeatability, high rigidity & load capacity to make it ideal for any robotic application.

Automation applications:

End effector tooling and interchangeable fixturing can be changed quickly and easily to accommodate many different styles of parts on the same assembly machine or machining center.

Durable Components

Locking components are made from hardened bearing & tool steels

Self Lubricating Seals

Self lubricating dynamic seals

Quality Materials

Each body is made of lightweight 7075-T6 aircraft quality aluminum

Pneumatic Ports

User pneumatic ports

Robot Plate

Tool Plate

Precision Cone Positioning

Machine tool proven mating conical coupling

Durable Finish

Bodies have hard-coat anodize 60RC with Teflon® impregnation

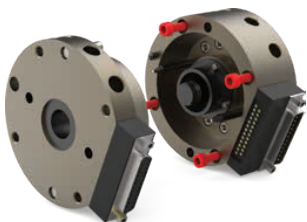
Electrical Contacts

(Sold Separately- See "How to Order" Section for more info)

Failsafe Operation

Failsafe locking spring keeps units coupled in the event of pressure loss

Mounting Information



Robot Plate

mounts with screws from behind or through the front and locates with dowel pins for accuracy.



Tool Plate

mounts payload with screws from behind or through the front and locates with dowel pins for accuracy. Protect cone surfaces from debris to insure proper positioning.

Dimensions and technical information are subject to change without notice

RQC/RTP SERIES

Automatic Tool Changers | Features and Benefits

Robotic applications:

Perfect for those flexible/multiple tooling applications utilizing one Robot. This product was designed with exceptional repeatability, high rigidity & load capacity to make it ideal for any robotic application.

Automation applications:

End effector tooling and interchangeable fixturing can be changed quickly and easily to accommodate many different styles of parts on the same assembly machine or machining center.

Highly configurable, modular design (RQC/RTP):

The Modular RQC series easily accommodates up to (4) optional modular interfaces, offering a high level of flexibility.

Additional Optional Air, Fluid, Electrical Modules are Available.

Air and fluid ports modules are available in NPT, BSPP, and BSPT (See Page TC-RQTP-17)

Optional 19 Pin I/O Module

Spring loaded contacts are recessed for a better protection

V-Seal provides moisture resistance

Robot Plate

Tool Plate

Locking Mechanisms

Made from hardened stainless steel, they provide a low stress, highly rigid locking capability

Latch/Unlatch Switch

RQC's are pre-equipped for latch, unlatch (all sizes) and part presence sensing (sizes 800 & 1200 only)

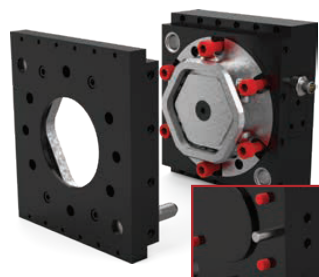
Dry contact or inductive sensors with or w/o connectors are available

Optional 6 Port Pneumatic Module

Locating Pins

Optional (4) Self-Sealing Fluid Module

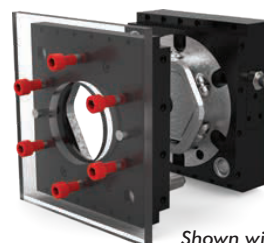
(sizes 800, 1200 & 2400 only)



Robot Plate

has counterbored holes for mounting with a dowel pin hole, a raised boss for location, and features a ISO9409-1 mounting pattern

Back Side of Robot Plate



Tool Plate

has tapped holes, two dowel pin holes for accurate location of payload, and features a ISO9409-1 mounting pattern

Shown with customer supplied adapter plate.

Dimensions and technical information are subject to change without notice