



AWP Series Cobot Palletizing Workstation Catalog

AWP Series Palletizing Workstation

AUCTECH can deeply cultivate the application of palletizing industry, cooperate with industry partners, and provide turnkey mode palletizing workstation products for end customers relying on AUCTECH's technical reserve and R&D capability. Excellent application interaction, rapid application deployment, and short investment return period make palletizing a very light work.

AWP-20S Payload: 30kg Reach: 1480mm	AWP-20 Payload: 25kg Reach: 1680mm	AWP-20L Payload: 20kg Reach: 1880mm
AWP-40S Payload: 50kg Reach: 1580mm	AWP-40 Payload: 45kg Reach: 1780mm	AWP-40L Payload: 40kg Reach: 1980mm

- Notes:
- 1. Size limit of a single carton: ≤600mm*650mm (from top view)
 - 2. If the weight of a single carton exceeds 30kg, please customize the suction system.



Product Features

01

Easy operation, plug-and-play, and convenient commissioning.

02

Small footprint, flexible site layout.

03

Compatible with different kinds of boxes and stacks.

04

With memory function, flexible switching of palletizing schemes.

05

Simple parameter input, free selection of stacking patterns, and automatic alignment.

06

With mechanical collision prevention, higher safety, can also be equipped with guardrail or light curtains.

07

Automatic lifting according to the height of the palletizing, up to 2.5 meters.

08

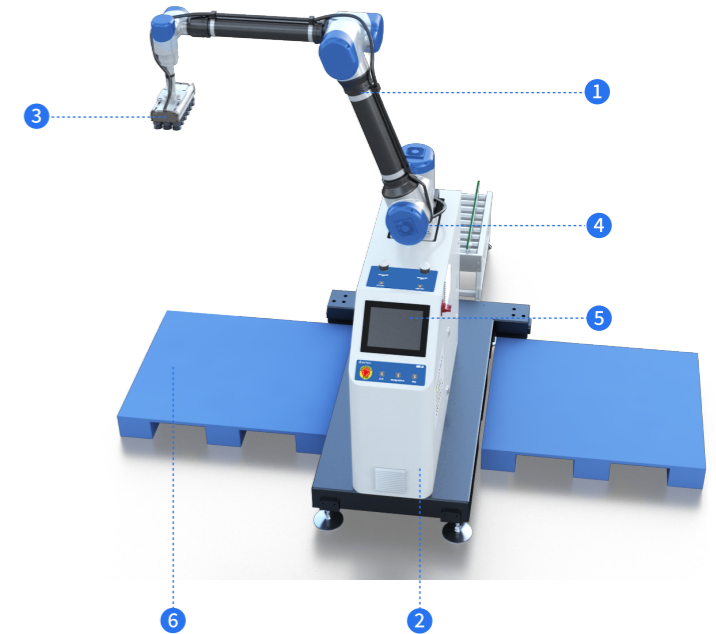
All-day operation, saving time, labor, and effort.

09

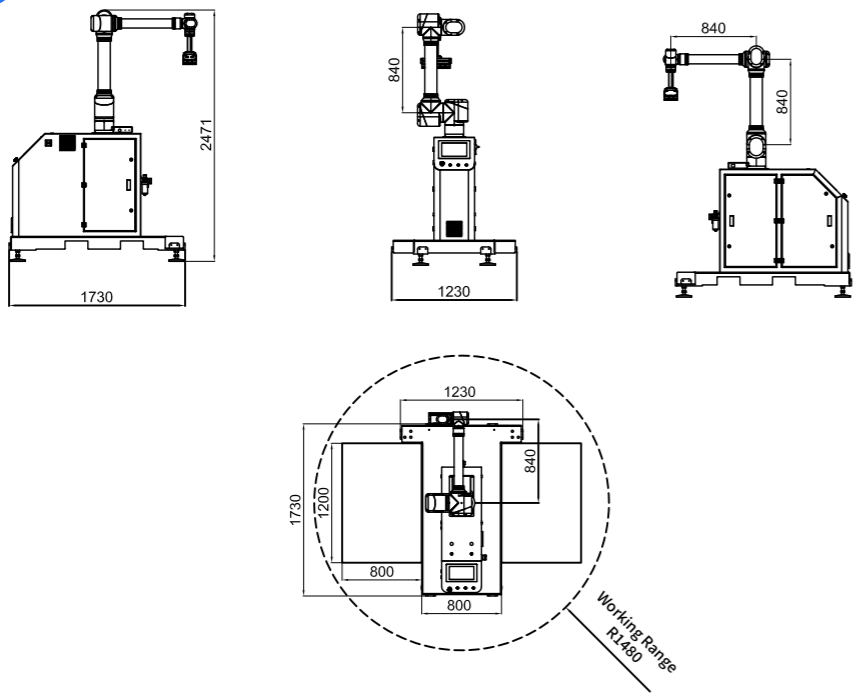
Widely used in various industries such as food, household paper, beverages, pharmaceuticals, daily chemicals, electronics, and appliances.

Product Composition

- 1 Collaborative Robot
- 2 Electric Controller Cabinet
- 3 End Suction System such as Vacuum Gripper
- 4 Lifting Column
- 5 Teach Pendant With PalletStudio System
- 6 Pallet Positioning System



Product Dimensions



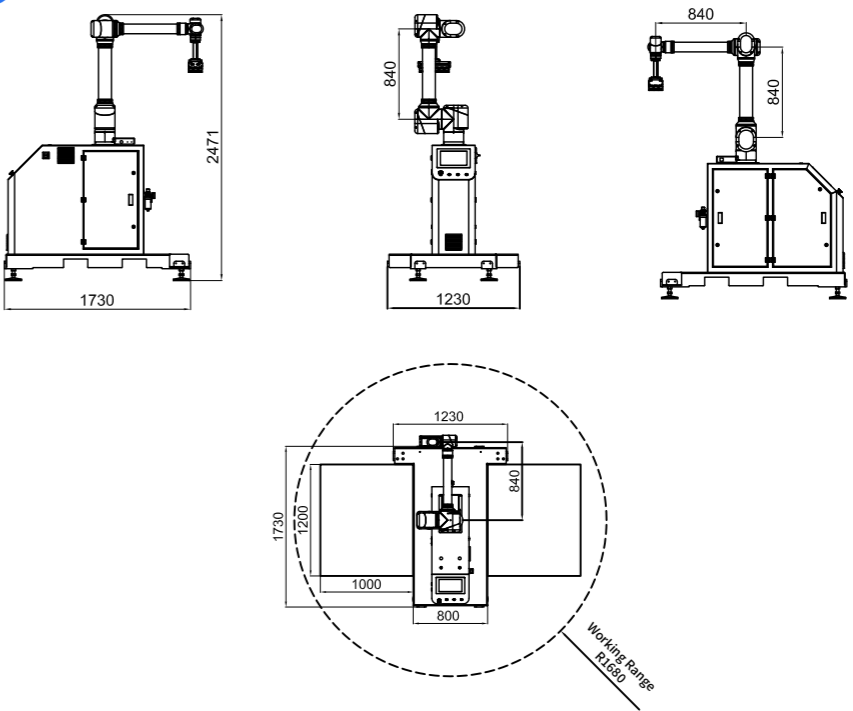
AWP-20S Dimensions (subject to actual objects)

Technical Parameters

Model	AWP-20S
Weight	About 600kg
Payload*	30kg
Suction cup weight	10kg
Maximum carton weight	20kg
Reach	1480mm
Maximum palletizing cycle	≦8pcs/min
Maximum palletizing height	≦2350mm
Repeat positioning accuracy	±0.05mm
Pallet placement form	Manual, one left and one right
Maximum compatible pallet	1200mm*1000mm
Dimensions	L1230mm*W1730mm*H2471mm
Dimensions of wooden boxes	L2200mm*W1450mm*H1900mm
Maximum power	3.5KW
Reference gas consumption	240-460L/min
Power supply requirements	AC220V±10%, 50Hz±5%
Gas supply requirements	0.5～0.7Mpa
Communication method	EtherCAT interface, expansion IO
IP level	Robot arm IP53/Cabinet IP24
Ambient temperature	0-50°C
Noise	<80dB
Main color	Blue gray

*Payload= Suction cup weight + Maximum carton weight

Product Dimensions



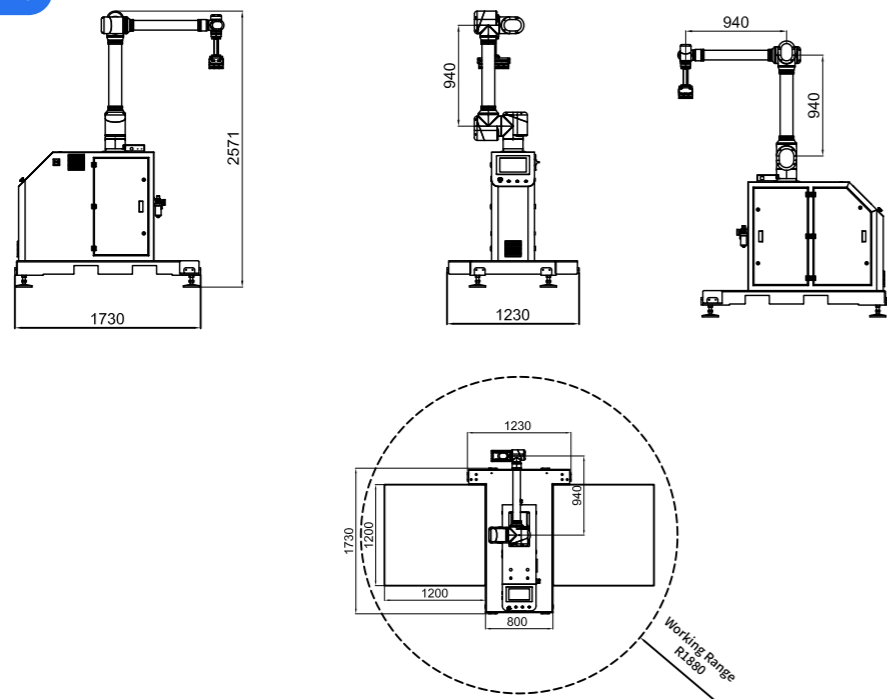
AWP-20 Dimensions (subject to actual objects)

Technical Parameters

Model	AWP-20
Weight	About 600kg
Payload*	25kg
Suction cup weight	7kg
Maximum carton weight	18kg
Reach	1680mm
Maximum palletizing cycle	≦10pcs/min
Maximum palletizing height	≦2450mm
Repeat positioning accuracy	±0.05mm
Pallet placement form	Manual, one left and one right
Maximum compatible pallet	1200mm*1100mm
Dimensions	L1230mm*W1730mm*H2471mm
Dimensions of wooden boxes	L2200mm*W1450mm*H1900mm
Maximum power	3.5KW
Reference gas consumption	240-460L/min
Power supply requirements	AC220V±10%, 50Hz±5%
Gas supply requirements	0.5～0.7Mpa
Communication method	EtherCAT interface, expansion IO
IP level	Robot arm IP53/Cabinet IP24
Ambient temperature	0-50°C
Noise	<80dB
Main color	Blue gray

*Payload= Suction cup weight + Maximum carton weight

Product Dimensions



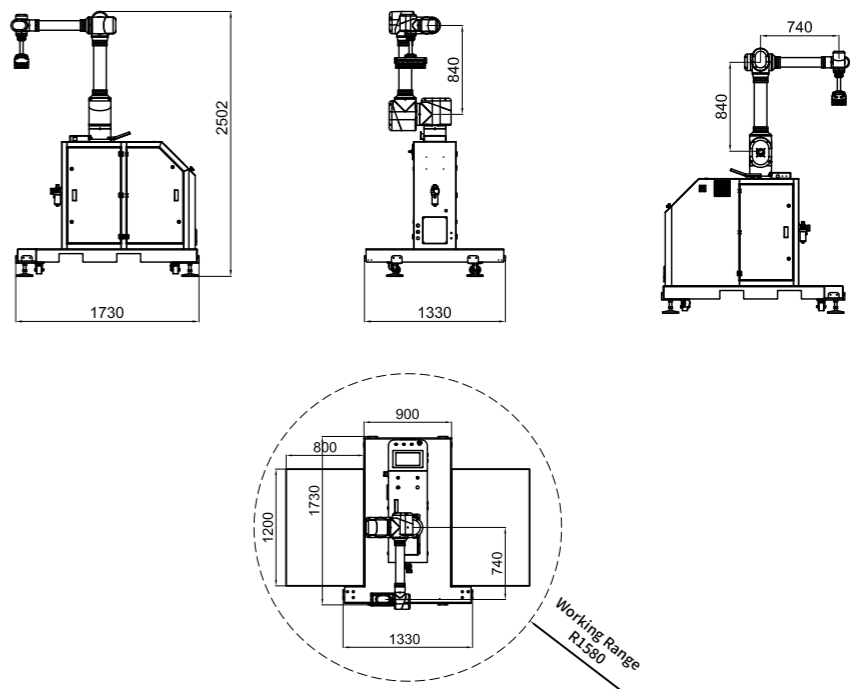
AWP-20L Dimensions (subject to actual objects)

Technical Parameters

Model	AWP-20L
Weight	About 600kg
Payload*	20kg
Suction cup weight	7kg
Maximum carton weight	13kg
Reach	1880mm
Maximum palletizing cycle	≦ 12pcs/min
Maximum palletizing height	≦ 2550mm
Repeat positioning accuracy	±0.05mm
Pallet placement form	Manual, one left and one right
Maximum compatible pallet	1300mm*1200mm
Dimensions	L1230mm*W1730mm*H2571mm
Dimensions of wooden boxes	L2200mm*W1450mm*H1900mm
Maximum power	3.5KW
Reference gas consumption	240-460L/min
Power supply requirements	AC220V±10%, 50Hz±5%
Gas supply requirements	0.5~0.7Mpa
Communication method	EtherCAT interface, expansion IO
IP level	Robot arm IP53/Cabinet IP24
Ambient temperature	0-50°C
Noise	<80dB
Main color	Blue gray

*Payload= Suction cup weight + Maximum carton weight

Product Dimensions



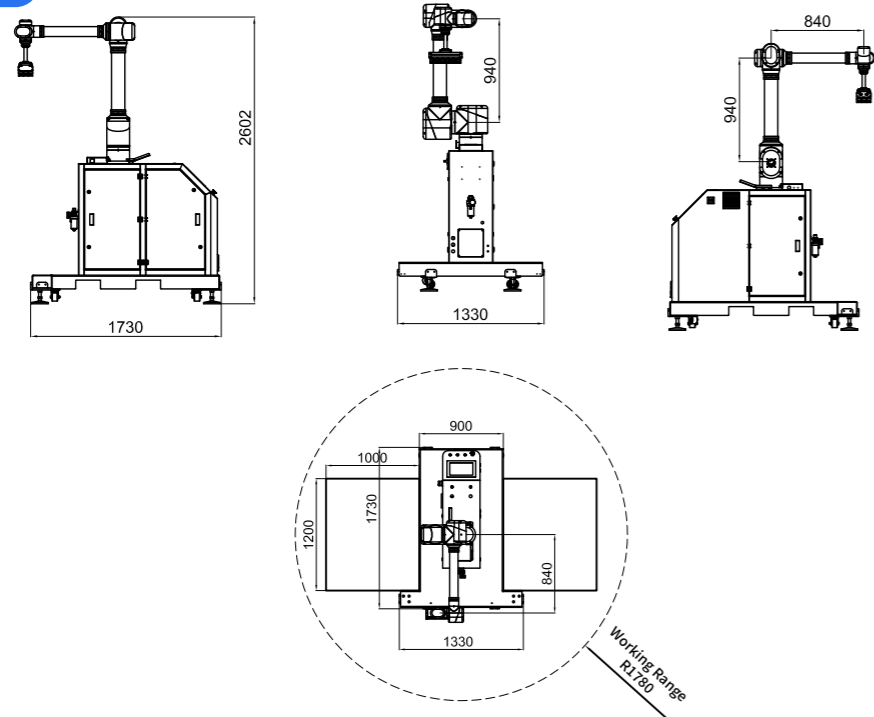
AWP-40S Dimensions (subject to actual objects)

Technical Parameters

Model	AWP-40S
Weight	About 650kg
Payload*	50kg
Suction cup weight	12kg
Maximum carton weight	38kg
Reach	1580mm
Maximum palletizing cycle	≦ 6pcs/min
Maximum palletizing height	≦ 2450mm
Repeat positioning accuracy	±0.05mm
Pallet placement form	Manual, one left and one right
Maximum compatible pallet	1200mm*1000mm
Dimensions	L1330mm*W1730mm*H2502mm
Dimensions of wooden boxes	L2250mm*W1450mm*H1900mm
Maximum power	3.5KW
Reference gas consumption	240-460L/min
Power supply requirements	AC220V±10%, 50Hz±5%
Gas supply requirements	0.5~0.7Mpa
Communication method	EtherCAT interface, expansion IO
IP level	Robot arm IP53/Cabinet IP24
Ambient temperature	0-50°C
Noise	<80dB
Main color	Blue gray

*Payload= Suction cup weight + Maximum carton weight

Product Dimensions



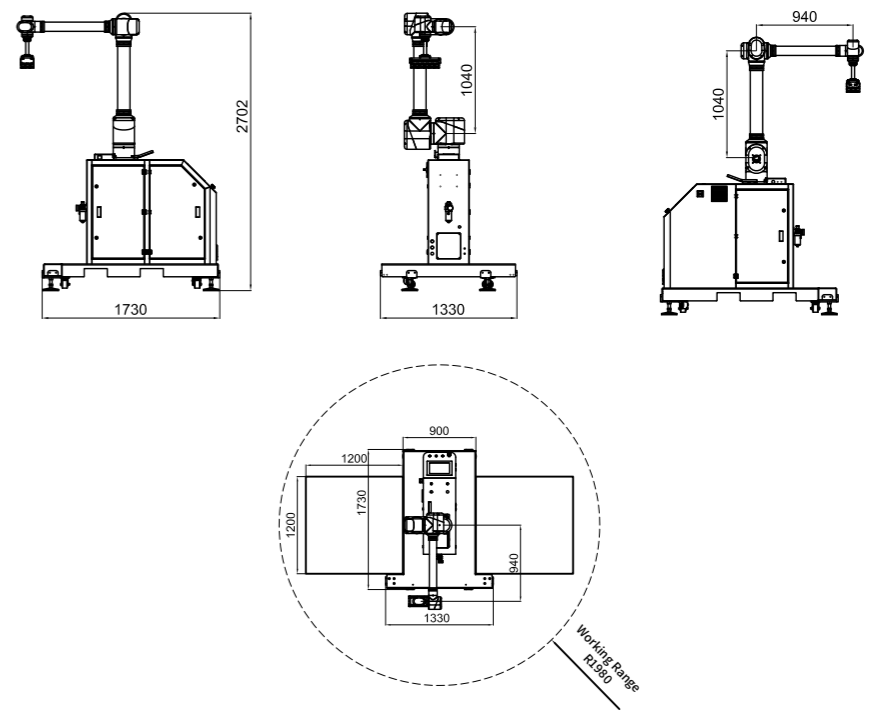
AWP-40 Dimensions (subject to actual objects)

Technical Parameters

Model	AWP-40
Weight	About 650kg
Payload*	45kg
Suction cup weight	12kg
Maximum carton weight	33kg
Reach	1780mm
Maximum palletizing cycle	≦8pcs/min
Maximum palletizing height	≦2550mm
Repeat positioning accuracy	±0.05mm
Pallet placement form	Manual, one left and one right
Maximum compatible pallet	1200mm*1200mm
Dimensions	L1330mm*W1730mm*H2602mm
Dimensions of wooden boxes	L2250mm*W1450mm*H1900mm
Maximum power	3.5KW
Reference gas consumption	240-460L/min
Power supply requirements	AC220V±10%, 50Hz±5%
Gas supply requirements	0.5~0.7Mpa
Communication method	EtherCAT interface, expansion IO
IP level	Robot arm IP53/Cabinet IP24
Ambient temperature	0-50°C
Noise	<80dB
Main color	Blue gray

*Payload= Suction cup weight + Maximum carton weight

Product Dimensions



AWP-40L Dimensions (subject to actual objects)

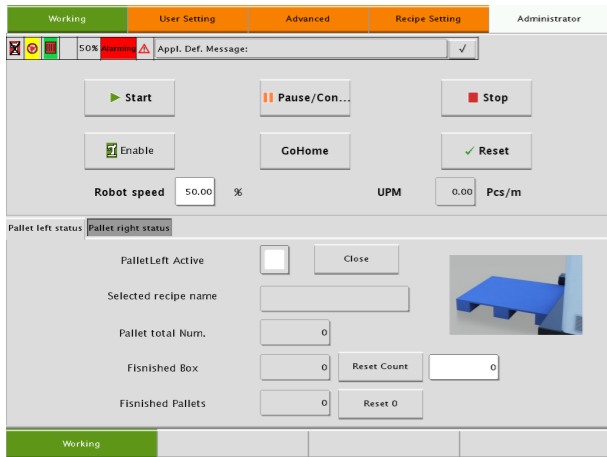
Technical Parameters

Model	AWP-40L
Weight	About 650kg
Payload*	40kg
Suction cup weight	10kg
Maximum carton weight	30kg
Reach	1980mm
Maximum palletizing cycle	≦10pcs/min
Maximum palletizing height	≦2650mm
Repeat positioning accuracy	±0.05mm
Pallet placement form	Manual, one left and one right
Maximum compatible pallet	1400mm*1200mm
Dimensions	L1330mm*W1730mm*H2702mm
Dimensions of wooden boxes	L2250mm*W1450mm*H1900mm
Maximum power	3.5KW
Reference gas consumption	240-460L/min
Power supply requirements	AC220V±10%, 50Hz±5%
Gas supply requirements	0.5~0.7Mpa
Communication method	EtherCAT interface, expansion IO
IP level	Robot arm IP53/Cabinet IP24
Ambient temperature	0-50°C
Noise	<80dB
Main color	Blue gray

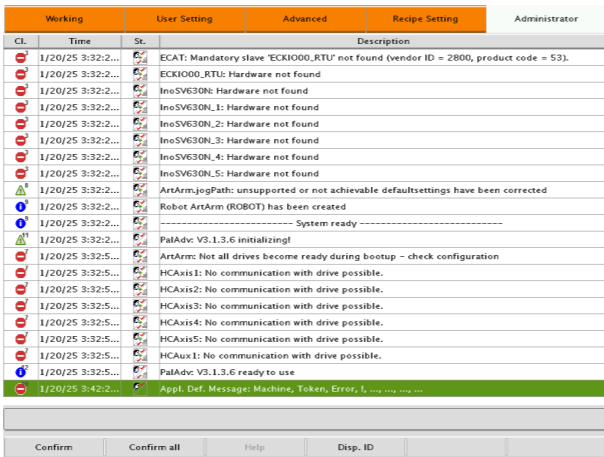
*Payload= Suction cup weight + Maximum carton weight

AWP Series Palletizing Workstation

Operator Interface

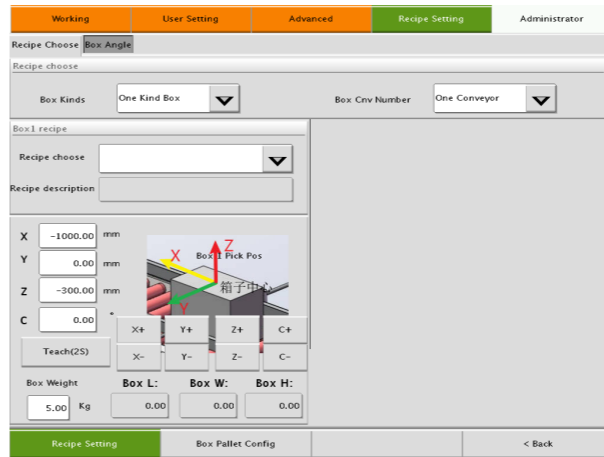


Main Page

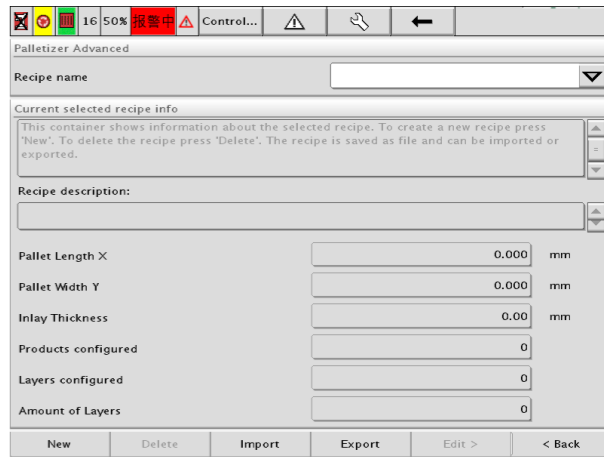


Alarm Page

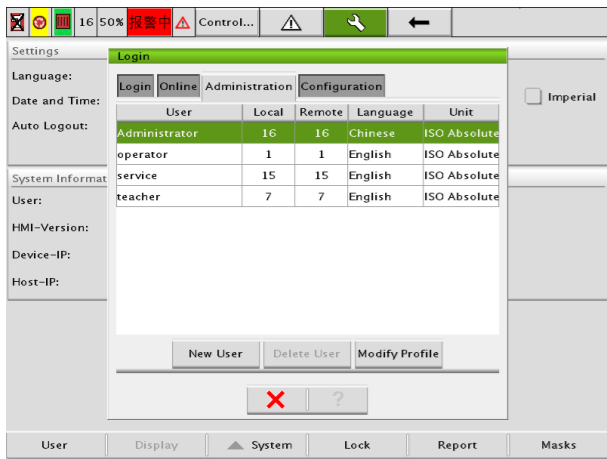
Operator Interface



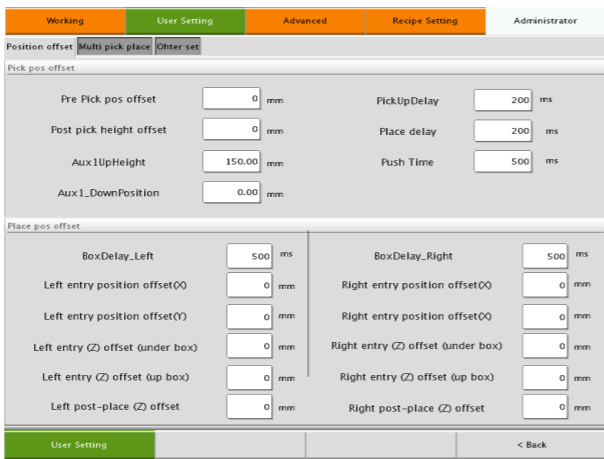
Carton Grabbing Configuration



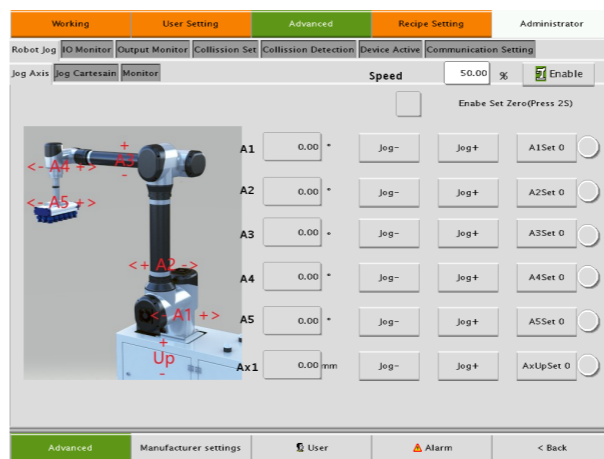
Carton Stacking Configuration



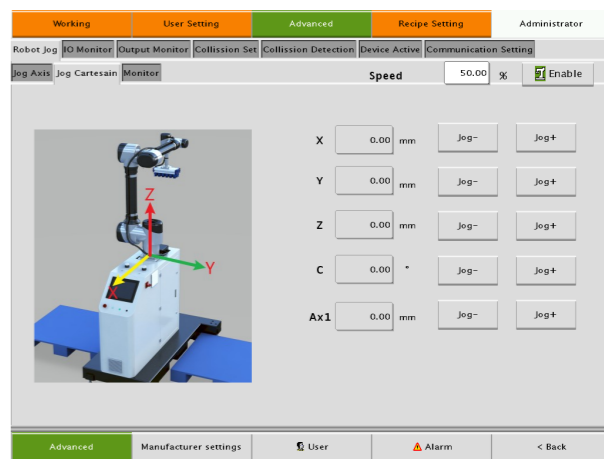
User Control Permissions



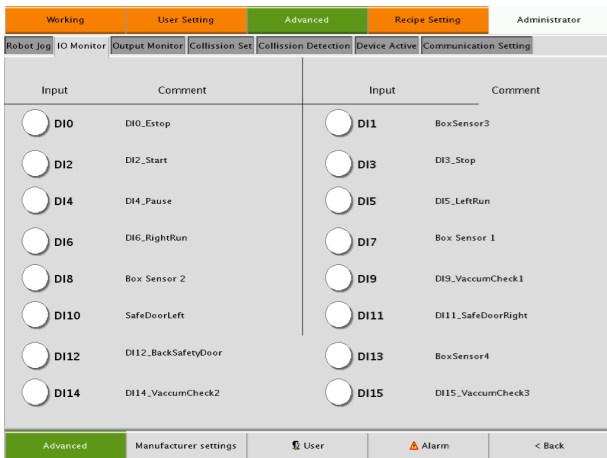
Robot Pick-and-place Compensation and Delay Settings



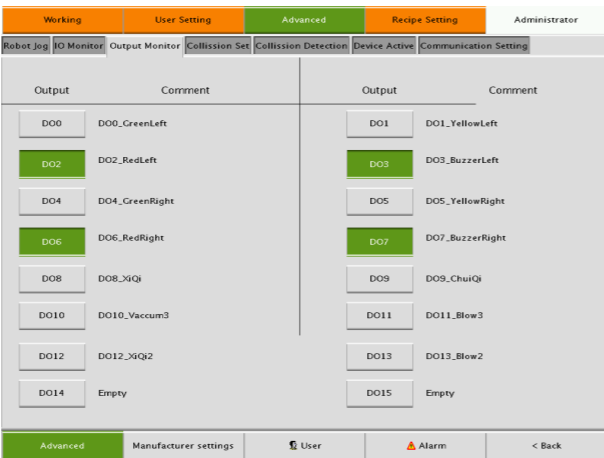
Robot Single-axis Jog Page



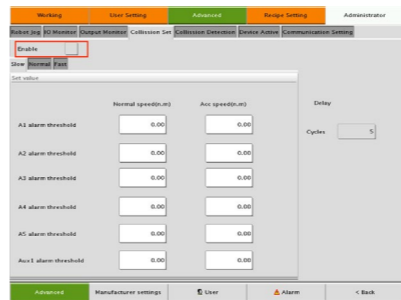
Robot Jog Button



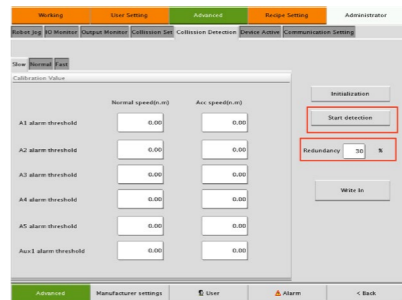
Robot IO Input Monitoring



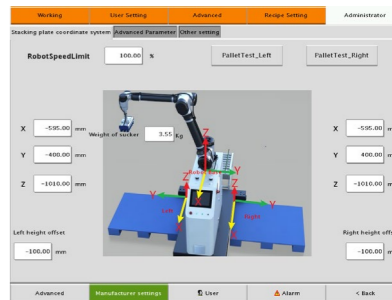
Robot IO Output Monitoring



Anti-collision Settings

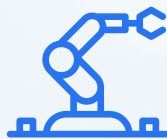


Anti-collision Detection



Manufacturer's Pallet Parameter Settings

deceler



AUCTECH Makes Human Life
and Manufacturing More Convenient

Deceler Vibrotek Controls Pvt. Ltd.

Tel: +91 94455 25883

Maill: sales@deceler.in

Web: www.deceler.in

Head Office : No. 38, First Floor, Arul Mary Street, Soosaiya Nagar, Noombal, Chennai, Tamilnadu - 600077.

Marketing Office: 3rd Floor, Office No. 309 A, Bramha Sky, Uzuri-A, MIDC, Pimpri, Pune, Maharashtra - 411018.

All rights reserved. Product specifications and technical data are subject to change without notice.