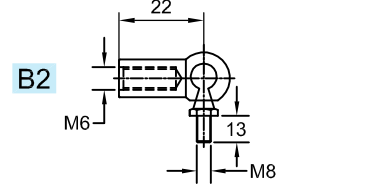
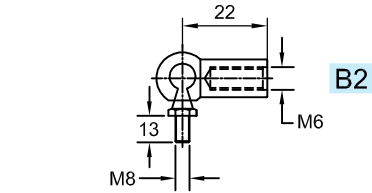


Standard Specifications

L1 (STROKE)		L2 (EXTENDED LENGTH)		FORCE F1(N)
MIN.	MAX.	MIN.	MAX.	
50	200	146	440	10 - 400



Technical Data

SUPER Gas Springs are self contained and maintenance free.

Mounting Position: Can be mounted in any position, but we recommend mounting with position downwards so that the damping is effective at the end of extension stroke.

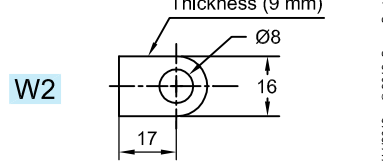
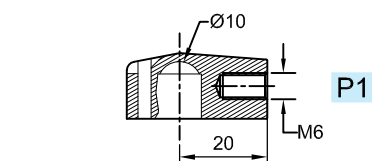
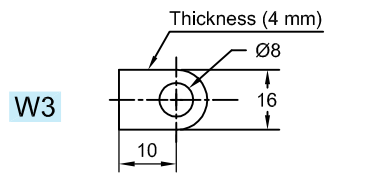
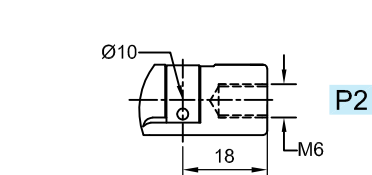
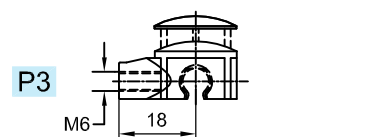
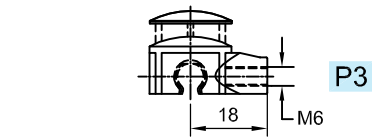
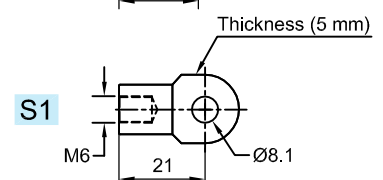
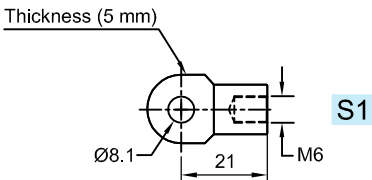
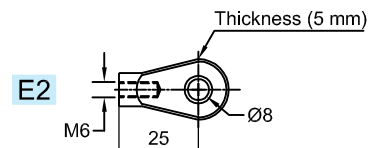
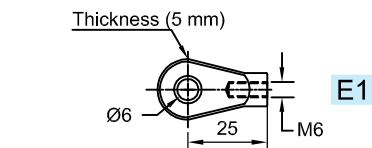
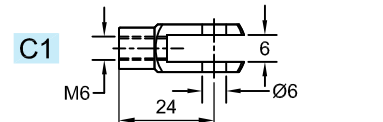
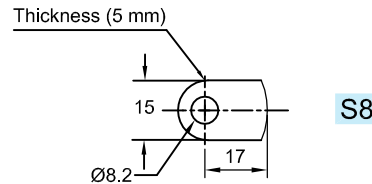
End position damping length: approximately (20 mm)

Temperature range: - 30° to + 80° C

Medium: Nitrogen gas and oil (for end position damping)

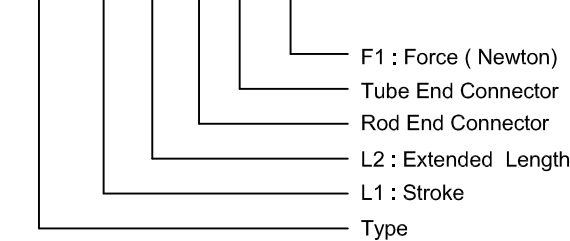
Material: Hard chrome plated steel piston rod, body: Epoxy coated or powder coated.

End fittings: Zinc plated , Plastic, Steel, Stainless Steel and Aluminium.



Ordering Example

SL08 100 285 P1 B2 400N



NOTE : PLEASE TICK THE BOX FOR END CONNECTOR

Please mention "00" in the part number if you do not require the end fittings.

Some end fittings are interchangeable and must be positively secured by the customer to prevent unscrewing (i.e. loctite).

We reserve the right to make modifications